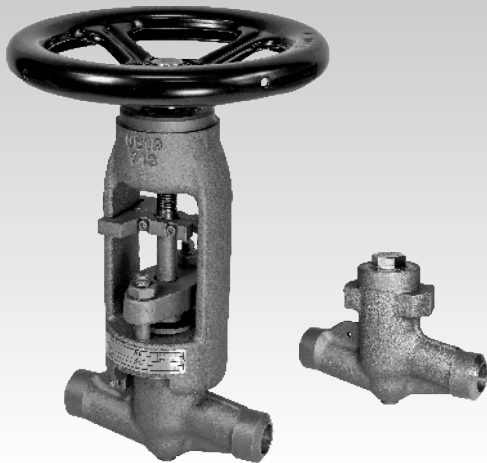


02 - 08.3
04.19.GB

SHUT-OFF AND CHECK VALVES

UV / ZV 926





UV / ZV 926

Shut-off and check valves

DN 10 - 65
PN 63, 100, 160, 250
320, 400, 630

Shut-off valves UV 926 are single-seated globe valves designed for shutting off flow of a media. The valves could be optionally equipped with shaped plug for rough control in case of demand. Shut-off valves UV 926 according to ČSN EN 13709.

Check valves ZV 926 are single-seated two-way valves ensuring the flow of the medium in the desired direction. These valves according to ČSN EN 16767.

The valve seat surface is made with hard metal overlay due to increased service life. The conical shape of the seat in combination with the spherical shape of the plug ensures a high tightness of the closure. The valves are delivered with weld ends or can be delivered in flanged execution if required.

Application

- power generation
 - chemical processing industries
- Maximal permissible pressure and temperature see pg. 7 and 8.

Process media

- water
- steam
- other liquids and gases which are compatible with materials of the valve body and internal materials

Installation

The valves with hand wheel can be installed in any position. The valve with electric actuator can be installed in any position except position when the actuator is under the valve body. It is necessary to ensure enough of space for handling. The flow direction is arbitrary except execution with control plug. In case of control plug the flow direction has to be under the plug. It is suitable to insulate the pipeline around the valve but it is prohibited to insulate the valve yoke.

Check valves ZV926 AUT (without spring) can be installed in a horizontal position blinder up only.

Check valves ZV926 AUP (with spring) can be installed in any position.

The flow direction must agree with arrow on the valve body.

It is necessary to ensure enough of space for handling and maintenance.

Technical data		
Series	UV 926	ZV 926
Execution	Shut-off valve (optionally with control plug)	Check valve, single-seated, two-way
Nominal size	DN 10 to 65	
Nominal pressure	PN 63, 100, 160, 250, 320, 400, 630	
Seat material	Body material + hard metal overlay Stellite 6	
Plug material	1.4923 + hard metal overlay Real 096	
Yoke material	1.0619	1.7357 ---
Weld ends connection	Acc. to ČSN EN 12627, ČSN 131075	
Flange ends connection	Acc. to ČSN EN 1092-1	
Available types of flanges	Type B1 (raised-face flange); type B2 (plain flange), type C (tongue flange); type D (flange with groove); type E (male flange); typ F (female flange)	
Flow characteristic	on-off; control	on-off
Leakage rate	Class A (On-Off characteristic) acc. to ČSN EN 12266-1	
	Class D (Control characteristic) acc. to ČSN EN 12266-1 (11/2003)	---
Packing	Expanded graphite	

Body material	Operating temperature (from -10°C)
11416	up to 400°C
12020	up to 350°C
1.0460	up to 450°C
15128	up to 575°C
1.4571	up to 600°C
1.4903	up to 600°C
1.5415	up to 550°C
1.7335	up to 550°C
1.7380	up to 600°C
1.7383	up to 600°C

Body material	Operating temperature (from -10°C)
1.4541	up to 600°C
1.4901	up to 650°C
A182 F92	up to 650°C
A182 F22	up to 600°C
A182 F316	up to 650°C

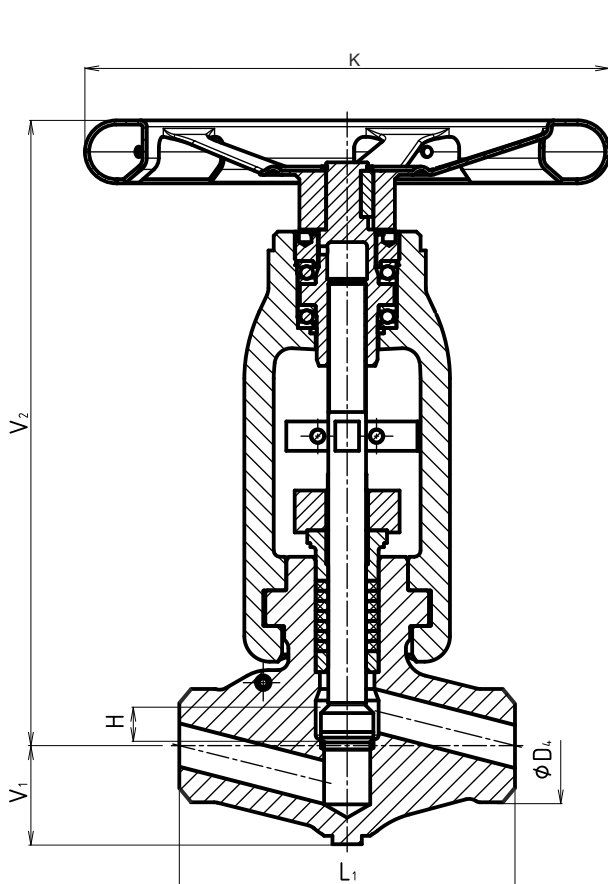
Dimensions of weights of UV 926 with weld ends

DN	H [mm]	L ₁ [mm]	V ₁ [mm]	V ₂ [mm]	V ₃ [mm]	D _{4max} [mm]	K [mm]	D ₅ [mm]	D ₆ [mm]	D ₇ [mm]	D ₈ [mm]	a _p [mm]	n _p	d _p [mm]	m ₁ [kg]
10	12	150	33	266	225	36	200	125	102	70	20	14	8	12	5.8
15	16	160	47	298	250	54	250	125	102	70	20	14	8	12	10
20	22	210	66	387	319	70	400	175	140	100	30	18	8	18	21
25	36	250	85	480	401	90	500	175	140	100	30	18	8	18	37
32															
40															
50															
65															

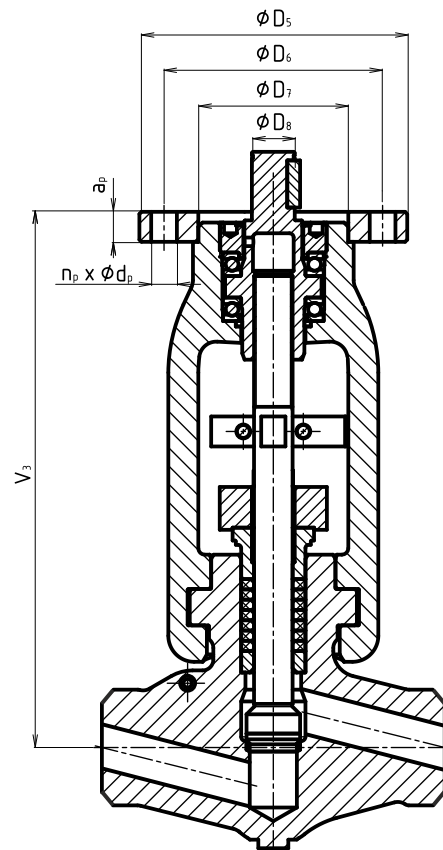
m₁ - approximate weight with weld ends

Dimensions of weld ends according to ČSN EN 12627 (ČSN 131075), or by customer request.

Flanged connection optionally if required.



Weld ends execution with hand wheel



Weld ends execution with adjustment for electric actuator

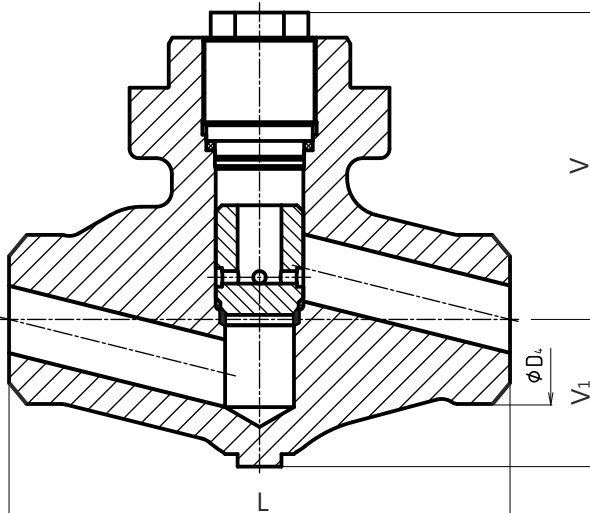
Dimensions and weights of ZV 926 with weld ends

DN	L [mm]	V [mm]	V ₁ [mm]	D _{4 max} [mm]	m ₁ [kg]
10					
15	150	82	33	36	2
20					
25	160	98	47	54	4
32					
40	210	128	66	70	9
50					
65	250	154	85	90	15

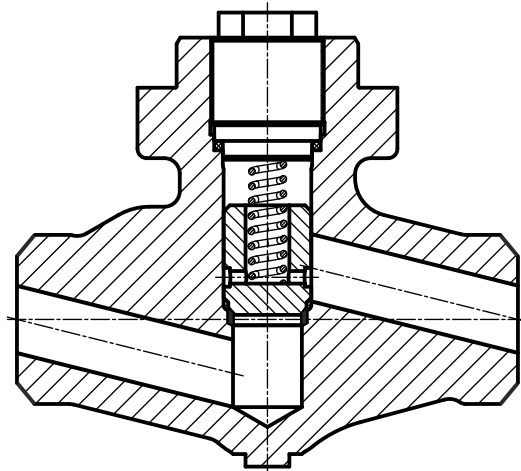
m₁ - přibližná hmotnost přivařovacího provedení

Rozměry přivařovacích konců dle ČSN EN 12627 (ČSN 131075), popř. dle požadavku zákazníka.

Pozn.: Přírubové provedení pouze na požadavek zákazníka.



Welded execution without spring



Welded execution with spring

Valve complete specification No. for ordering UV / ZV 926		XX	XXX	XXX	XXXX	XX	XXX	/	XXX	-	XXX
1. Valve	Shut-off valve	UV									
	Check valve	ZV									
2. Označení typu			926								
3. Type of actuating <i>¹⁾ UV 926 only</i> <i>²⁾ ZV 926 only</i>	Electric actuator ¹⁾				EXX						
	Hand wheel ¹⁾				RXX						
	Automatic without spring ²⁾				AUT						
	Automatic with spring ²⁾				AUP						
4. Connexion	Flanges with raised faces, type B1										1
	Female flange, type F										2
	Flanges with plain faces, type B2										3
	Welded										4
	Male flange, type E										5
	Tongue flange, type C										6
	Flange with groove, type D										7
	Other										9
5. Body material	Material 11416 (-10 to 400°C)										A
	Material 12020 (-10 to 350°C)										B
	Material 15128 (-10 to 575°C)										C
	Material 1.0460 (-10 to 450°C)										D
	Material 1.4571 (-10 to 600°C)										E
	Material 1.4903 (-10 to 600°C)										F
	Material 1.5415 (-10 to 550°C)										G
	Material 1.7335 (-10 to 550°C)										H
	Material 1.7380 (-10 to 600°C)										I
	Material 1.7383 (-10 to 600°C)										J
	Material 1.4541 (-10 to 600°C)										K
	Material 1.4901 (-10 to 650°C)										L
	Material A182 F92 (-10 to 650°C)										M
	Material A182 F22 (-10 to 600°C)										N
Material A182 F316 (-10 to 650°C)										O	
Other											9
6. Packing	Graphite										5
7. Execution	Standard										0
8. Plug type	Shut-off										0
	Control										1
9. Accessories	Without										0
10. Nominal pressure	PN 63										063
	PN 100										100
	PN 160										160
	PN 250										250
	PN 320										320
	PN 400										400
	PN 630										630
	Operating parameters										
11. Operating temp. °C	According to body material										/ XXX
12. Nominal diameter	DN										- XXX

Order example:

UV926 R25 4B50 00 063/350-020, weld ends acc. to EN 12627-2-DN20, pipe size 26,9 x 2,3

Data for an actuator specification

The valves are designed to be actuated with multi-turn electric actuators of the following producers: Auma, Schiebel, ZPA Pečky or others. Actuator connection corresponds ČSN EN ISO 5210, see dimensional sketch on the pg. 3 on this data sheet. Valves are adjusted with actuators so that in the closed position, i.e. when closing to the seat, the torque switch turns off. In the open position they are adjusted so that the position switch turns off (the torque switch for open position is adjusted as a safety switch to protect the valve against a damage only).

Connecting flange of actuator is designed to allow rotation of the drive of 45°.

Assigning actuator to valve					
DN	Stroke [mm]	RPM / stroke [n]	Max. torque		Connection acc. to ČSN EN ISO 5210
			max. PN250 [Nm]	PN320 and more [Nm]	
10 - 15	12	6	20	25	F10 / type B3
20 - 25	16	8	40	55	F10 / type B3
32 - 40	22	7,3	80	110	F14 / type B3
50 - 65	36	6	180	250	F14 / type B3

Recommended values of output speed (RPM)		
DN	Shut-off valve (running time 10 - 20 sec.)	Shut-off valve with control plug (running time 40 - 60 sec.)
	[n/min.]	[n/min.]
10 - 15	18 - 36	6 - 9
20 - 25	24 - 48	8 - 12
32 - 40	22 - 44	7,5 - 11
50 - 65	18 - 36	6 - 9

Actuator marking in valve specification No.

Electric actuator Auma SA 07.2	EAA	Electric actuator SIPOS 2SA50	ETB
Electric actuator Auma SAEx 07.2	EAB	Electric actuator SIPOS 2SA55	ETC
Electric actuator Auma SAR 07.2	EAC	Electric actuator SIPOS 2SA58 HiMod	ETC
Electric actuator Auma SAREx 07.2	EAD	Electric actuator Modact MON/MOP	EYE
Electric actuator Auma SA 07.6	EAE	Electric actuator Modact MON/MOP Control	EYF
Electric actuator Auma SAEx 07.6	EAF	Electric actuator Modact MONED/MOPED	EYF
Electric actuator Auma SAR 07.6	EAG	Electric actuator Modact MONJ	EYE
Electric actuator Auma SAREx 07.6	EAH	Electric actuator Modact MONJ Control	EYF
Electric actuator Auma SA 10.2	EAI	Electric actuator Modact MONEDJ	EYF
Electric actuator Auma SAEx 10.2	EAL	Hand wheel for DN 10 - 15	R20
Electric actuator Auma SAR 10.2	EAJ	Hand wheel for DN 20 - 25	R25
Electric actuator Auma SAREx 10.2	EAK	Hand wheel for DN 32 - 40	R40
Electric actuator Auma SA(R,Ex) 14.2	EAM	Hand wheel for DN 50 - 65	R50
Electric actuator Schiebel Ab3	EZA	Automatic without spring	AUT
Electric actuator Schiebel exAB3	EZB	Automatic with spring	AUP
Electric actuator Schiebel rAB3	EZC		
Electric actuator Schiebel exrAB3	EZD		
Electric actuator Schiebel Ab5	EZE		
Electric actuator Schiebel exAB5	EZF		
Electric actuator Schiebel rAB5	EZG		
Electric actuator Schiebel exrAB5	EZH		
Electric actuator Schiebel Ab8	EZI		
Electric actuator Schiebel exAB8	EZJ		
Electric actuator Schiebel rAB8	EZK		
Electric actuator Schiebel exrAB8	EZL		

Maximal permissible pressure values [Mpa]															
Material	PN	Temperature [°C]													
		100	150	200	250	300	350	400	450	500	550	575	600	625	650
Cast steel 11416	63	6.3	6.3	6.3	5.55	4.82	4.13	3.58	---	---	---	---	---	---	---
	100	10.0	10.0	10.0	8.81	7.65	6.55	5.68	---	---	---	---	---	---	---
	160	16.0	16.0	16.0	14.1	12.2	10.5	9.09	---	---	---	---	---	---	---
	250	25.0	25.0	25.0	22.0	19.1	16.4	14.2	---	---	---	---	---	---	---
	320	---	---	---	---	---	---	---	---	---	---	---	---	---	---
	400	40.0	40.0	40.0	35.2	30.6	26.2	22.7	---	---	---	---	---	---	---
	630	63.0	63.0	63.0	55.5	48.2	41.3	35.8	---	---	---	---	---	---	---
Cast steel 12020	63	6.3	5.82	5.51	5.04	4.56	4.09	---	---	---	---	---	---	---	---
	100	10.0	9.25	8.75	8.0	7.25	6.5	---	---	---	---	---	---	---	---
	160	16.0	14.8	14.0	12.8	11.6	10.4	---	---	---	---	---	---	---	---
	250	25.0	20.5	19.4	17.7	16.1	14.4	---	---	---	---	---	---	---	---
	320	---	---	---	---	---	---	---	---	---	---	---	---	---	---
	400	---	---	---	---	---	---	---	---	---	---	---	---	---	---
	630	---	---	---	---	---	---	---	---	---	---	---	---	---	---
Alloy steel 15128	63	6.3	6.3	6.3	6.3	6.3	6.3	6.3	6.3	6.3	3.91	2.47	---	---	---
	100	10.0	10.0	10.0	10.0	10.0	10.0	10.0	10.0	10.0	6.2	3.91	---	---	---
	160	16.0	16.0	16.0	16.0	16.0	16.0	16.0	16.0	16.0	9.92	6.26	---	---	---
	250	25.0	25.0	25.0	25.0	25.0	25.0	25.0	25.0	25.0	15.5	9.78	---	---	---
	320	---	---	---	---	---	---	---	---	---	---	---	---	---	---
	400	40.0	40.0	40.0	40.0	40.0	40.0	40.0	40.0	40.0	24.8	15.7	---	---	---
	630	63.0	63.0	63.0	63.0	63.0	63.0	63.0	63.0	63.0	39.1	24.7	---	---	---
Cast steel 1.0460 C22.8, P250GH	63	5.85	5.55	5.25	4.8	4.35	4.05	3.75	2.07	---	---	---	---	---	---
	100	9.28	8.8	8.33	7.61	6.9	6.42	5.95	3.28	---	---	---	---	---	---
	160	14.85	14.09	13.33	12.19	11.04	10.28	9.52	5.25	---	---	---	---	---	---
	250	23.21	22.02	20.83	19.04	17.26	16.07	14.88	8.21	---	---	---	---	---	---
	320	29.71	28.19	26.66	24.38	22.09	20.57	19.04	10.51	---	---	---	---	---	---
	400	37.14	35.23	33.33	30.47	27.61	25.71	23.8	13.14	---	---	---	---	---	---
	630	58.5	55.5	52.5	48.0	43.5	40.5	37.5	20.7	---	---	---	---	---	---
Stainless steel 1.4571 X6CrNiMoTi17-12-2	63	6.3	6.09	5.64	5.38	5.12	4.85	4.59	4.41	4.15	3.67	3.39	2.45	---	---
	100	10.0	9.66	8.96	8.54	8.12	7.7	7.28	7.0	6.58	5.82	5.39	3.89	---	---
	160	16.0	15.46	14.34	13.67	13.0	12.33	11.65	11.21	10.53	9.32	8.62	6.23	---	---
	250	25.0	24.16	22.41	21.36	20.31	19.26	18.21	17.51	16.45	14.56	13.47	9.74	---	---
	320	32.0	30.93	28.68	27.34	26.0	24.65	23.31	22.41	21.07	18.64	17.25	12.46	---	---
	400	40.0	38.65	35.85	34.17	32.49	30.81	29.13	28.01	26.33	23.29	21.55	15.58	---	---
	630	63.0	60.9	56.4	53.8	51.2	48.5	45.9	44.1	41.5	36.7	33.9	24.5	---	---
Stainelss steel 1.4903 X10CrMoVnB9-1	63	6.3	6.3	6.3	6.3	6.3	5.91	5.38	4.97	4.15	3.67	3.52	3.15	---	---
	100	10.0	10.0	10.0	10.0	10.0	9.38	8.53	7.89	6.58	5.82	5.59	5.0	---	---
	160	16.0	16.0	16.0	16.0	16.0	15.02	13.66	12.62	10.53	9.32	8.94	8.0	---	---
	250	25.0	25.0	25.0	25.0	25.0	23.47	21.34	19.72	16.45	14.56	13.97	12.5	---	---
	320	32.0	32.0	32.0	32.0	32.0	30.04	27.32	25.25	21.07	18.64	17.88	16.01	---	---
	400	40.0	40.0	40.0	40.0	40.0	37.55	34.14	31.56	26.33	23.29	22.35	20.01	---	---
	630	63.0	63.0	63.0	63.0	63.0	59.1	53.8	49.7	41.5	36.7	35.2	31.5	---	---
Alloy steel 1.5415 15Mo3, 16Mo3	63	6.3	6.16	5.75	5.37	4.99	4.69	4.54	4.2	2.86	1.01	---	---	---	---
	100	10.0	9.78	9.12	8.52	7.92	7.44	7.2	6.67	4.53	1.6	---	---	---	---
	160	16.0	15.66	14.6	13.64	12.68	11.91	11.53	10.68	7.26	2.56	---	---	---	---
	250	25.0	24.46	22.81	21.31	19.81	18.61	18.01	16.68	11.34	4.0	---	---	---	---
	320	32.0	31.31	29.2	27.28	25.36	23.82	23.05	21.36	14.51	5.12	---	---	---	---
	400	40.0	39.13	36.49	34.09	31.69	29.77	28.81	26.7	18.14	6.4	---	---	---	---
	630	63.0	61.6	57.5	53.7	49.9	46.9	45.4	42.0	28.6	10.1	---	---	---	---
Alloy steel 1.7335 13CrMo4-5	63	6.3	6.3	6.3	6.3	6.3	5.87	5.38	4.97	3.93	1.85	---	---	---	---
	100	10.0	10.0	10.0	10.0	10.0	9.31	8.53	7.89	6.24	2.93	---	---	---	---
	160	16.0	16.0	16.0	16.0	16.0	14.91	13.66	12.62	9.99	4.7	---	---	---	---
	250	25.0	25.0	25.0	25.0	25.0	23.29	21.34	19.72	15.6	7.34	---	---	---	---
	320	32.0	32.0	32.0	32.0	32.0	29.81	27.32	25.25	19.98	9.39	---	---	---	---
	400	40.0	40.0	40.0	40.0	40.0	37.26	34.14	31.56	24.97	11.74	---	---	---	---
	630	63.0	63.0	63.0	63.0	63.0	58.7	53.8	49.7	39.3	18.5	---	---	---	---



LDM, spol. s r.o.
Litomyšlská 1378
560 02 Česká Třebová
Czech Republic

tel.: +420 465 502 511
fax: +420 465 533 101
e-mail: sale@ldm.cz

LDM, spol. s r.o.
Office Prague
Podolská 50
147 01 Praha 4
Czech Republic

tel.: +420 241 087 360
fax: +420 241 087 192
e-mail: sale@ldm.cz

LDM, spol. s r.o.
Office Ústí nad Labem
Ladova 2548/38
400 11 Ústí nad Labem
- Severní Terasa
Czech Republic

tel.: +420 602 708 257
e-mail: sale@ldm.cz

LDM servis, spol. s r.o.
Litomyšlská 1378
560 02 Česká Třebová
Czech Republic

tel.: +420 465 502 411-3
fax: +420 465 531 010
e-mail: servis@ldm.cz

LDM Bratislava s.r.o.
Mierová 151
821 05 Bratislava
Slovakia

tel.: +421 2 43415027-8
fax: +421 2 43415029
e-mail: ldm@ldm.sk

LDM, Polska Sp. z o.o.
ul. Bednorza 1
40 384 Katowice
Poland

tel.: +48 32 730 56 33
fax: +48 32 730 52 33
mobile: +48 601 354 999
e-mail: ldmpolska@ldm.cz

LDM Armaturen GmbH
Wupperweg 21
D-51789 Lindlar
Germany

tel.: +49 2266 440333
fax: +49 2266 440372
mobile: +49 177 2960469
e-mail: ldmarmaturen@ldmvalves.com

OOO "LDM Promarmatura"
Jubilejnyj prospekt,
dom.6a, of. 601
141400 Khimki Moscow Region
Russia

tel.: +7 4957772238
fax: +7 4956662212
mobile: +7 9032254333
e-mail: inforus@ldmvalves.com

TOO "LDM"
Shakirova 33/1
kab. 103
100012 Karaganda
Kazakhstan

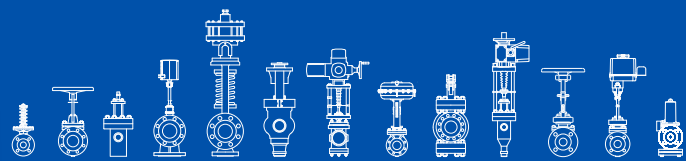
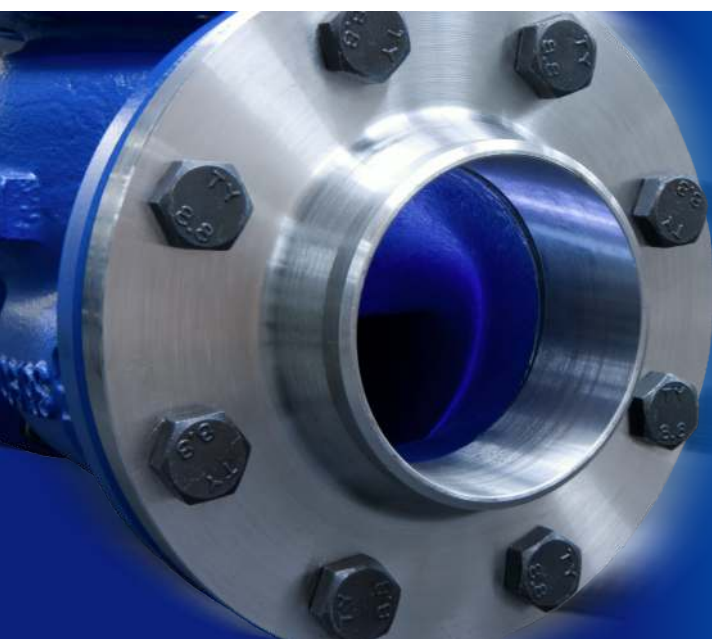
tel.: +7 7212 566 936
fax: +7 7212 566 936
mobile: +7 701 738 36 79
e-mail: sale@ldm.kz

LDM - Bulgaria - OOD
z. k. Mladost 1
bl. 42, floor 12, app. 57
1784 Sofia
Bulgaria

tel.: +359 2 9746311
fax: +359 2 9746311
mobile: +359 888 925 766
e-mail: ldm.bg@ldmvalves.com

www.ldmvalves.com

LDM reserves the right to modify or improve the designs or specifications of such products at any time without notice.



POWER THROUGH IDEAS

MYYNTI / SALES:

**FINKOVA OY
SINIKELLONTIE 10 B
FI-01300 VANTAA**

TEL: +358 10 229 1570

EMAIL: finkova@finkova.fi

WWW: www.finkova.fi



HUOLTO / SERVICE:

**FINKOVA SERVICE OY
RAUDOITTAJANTIE 7 A
FI-06450 PORVOO**

TEL: +358 10 229 1570

EMAIL: info@finkovaservice.fi

WWW: www.finkovaservice.fi

